



#14 REP NEWS

ENERGY SAVINGS - SUSTAINABILITY - RECYCLING

FOCUS ON GLOBAL ISSUES

Carbon footprint | Waste
Consumption reduction

REP SUSTAINABILITY SOLUTIONS

Energy-efficient production
Recycling | Retrofit

PROMISES, COMMITMENTS & ACTION PLAN

The REP roadmap
Commitment charter



REP Group
magazine

Focus on innovation, quality and sustainability

Like any business, individual, or community, REP is faced with the challenges of today and tomorrow's society. Therefore, it must **develop its activities for a better future**.

Many issues are at stake: environmental challenges, such as protecting our resources, adapting to climate change, improving energy efficiency, and promoting a circular economy; social challenges, ensuring workers' rights, good working conditions, and ethical practices with stakeholders.

To address the growing needs of its clients and the regulatory obligations across different countries, REP will focus its efforts on developing its emerging new-generation vertical presses. In the coming years, efforts will also be channeled towards promoting a new range of horizontal presses, alongside the development of industrialization processes for elastomer regeneration solutions (material recycling).

The investments made must reflect REP's ongoing commitment to innovation and quality, ensuring the delivery of tailored solutions that effectively meet our customers' needs.

Quality of Work Life (QWL) is a crucial driver of collective success; it also fosters a sense of belonging within the REP group.

Conscious of the challenges inherent in its activities and products, REP must **continue to integrate sustainable practices** into its design, procurement, and manufacturing processes, with a particular focus on reducing the carbon footprint of machines throughout their life cycle. Therefore, these commitments should bolster REP's standing as a responsible company, aligned with regulatory requirements, societal challenges, and customers' rising expectations.

Explore in this issue of REP News the variety of initiatives taken or planned by the group to **meet customer expectations** and **address Corporate Social Responsibility (CSR) challenges**.

Sustainability and
Quality of Work
Life: driving
our collective
success!



Hervé REVEL
CEO
REP international

REP NEWS No. 14

REP international Group
newsletter

Publication director:

Hervé REVEL

Design, writing, illustration,
production: REP international
Marketing Department

Photos © REP international
Impression Vassel Graphique

CSR BADGES

To make it easier for you to understand the **benefits** of each of our solutions, you will find one of the following **CSR badges** on each page.

Associated with one of the 3 CSR pillars, these badges will enable you to understand **how we can help you achieve your objectives!**

Contents

NEWS - INNOVATIONS - BONUSES

PAGES 4 - 5

FOCUS ON GLOBAL ISSUES



- Environmental footprint
- Energy transition and efficiency
- Production: Lean & circular
- Opportunity analysis

PAGES 6-7

OUR COMMITMENTS AND CSR ROADMAP



- Energy performance
- Eco-design
- Relations and suppliers



PAGE 8

OUR SOLUTIONS AND YOUR BENEFITS

PAGE 8

MORE PRODUCTION, LESS WASTE

New CMX with CRB

PAGES 9 - 11

A SUSTAINABLE WORKSHOP

- Develop your process
- Reduce and recycle your waste

PAGE 12

THE POWER OF HYBRID

PAGE 13

LONGEVITY & RETROFITTING

PAGE 14

INSTANT MEASUREMENT

Monitored and controlled
consumption

PAGE 15

TRAINING = EFFICIENCY



ENVIRONMENTAL PILLAR

- Reducing and controlling the carbon footprint and greenhouse gas emissions from activities,
- Minimizing the company's waste production,
- Promoting a circular economy approach,
- Educating and raising awareness among employees about environmental issues, and promote recycling habits
- Transitioning towards renewable energies and responsibly using natural resources,
- Establishing partnerships with responsible suppliers and subcontractors committed to the approach.



ECONOMIC PILLAR

- Encouraging the use of local suppliers and producers,
- Ensuring consistent service quality,
- Applying fair pricing,
- Respecting timely payment of invoices within legal deadlines,
- Ensuring transparency with investors.



SOCIAL PILLAR

- Fostering quality of life at work and well-being,
- Creating equal opportunities and encouraging diversity in teams,
- Enabling ethical and fair collaboration between all,
- Promoting hygiene, health and safety at the workplace,
- Promoting training, education and development.

GLOBAL CHALLENGES



Join us in exploring the global challenges of Corporate Social Responsibility and the crucial role of industry in achieving these objectives. Together, let us tackle the critical challenges of climate change, energy transition, waste management, and resource consumption.

Let us tackle these challenges to build a sustainable future!

MINIMIZING YOUR ENVIRONMENTAL FOOTPRINT



WHY?

- Responsibility towards the planet, preserving and limiting negative impacts
- Meeting stakeholder expectations
- Anticipating regulations and risks

WHAT BENEFITS FOR YOU?

- **Improving your carbon footprint**

Reinforcing your credibility and commitment to sustainability.

- **Reducing operating costs**

Optimizing the use of resources and improving production profitability with innovative equipment.

- **Positive impact on your brand image**

Enhance your reputation as a responsible stakeholder. Attract new potential candidates, clients, and partners who share the same vision.

HOW? OUR SOLUTIONS:



Investing in recycled materials

REP news Page 11

Optimizing your process

Technical information Page 9

Banking on longevity and retrofitting

Presentation on Page 13

MOVE TOWARDS TRANSITION AND ENERGY EFFICIENCY



WHY?

- Enhance your market competitiveness
- Preserve natural resources
- Anticipate future regulations
- Mitigate the risks associated with energy price volatility

WHAT BENEFITS FOR YOU?

- **Less operating costs**

Optimize the use of energy resources and make significant savings on energy bills and production costs.

- **Open up potential new markets**

New opportunities to develop innovative products and services, such as those associated with vehicle electrification.

- **Innovations and differentiation**

Stay motivated and competitive in the face of long-term competition.



HOW? OUR SOLUTIONS:

Reduce your production waste

Articles Pages 9 and 10

Transition to hybrid

Presentations Pages 9 and 12

TRANSFORMING PRODUCTION: LEAN & CIRCULAR PRODUCTION



WHY?

- To reduce the company's waste production
- To promote the exchange of ideas
- To create green jobs / promote involvement

WHAT BENEFITS FOR YOU?

- **Increased process efficiency**

Optimum operational processes (by eliminating non-essential activities), better quality of products and services.

- **Less management costs**

Embracing a circular model reduces waste disposal, storage, and procurement expenses.

- **Better satisfaction and loyalty**

Addressing customers' increasing expectations regarding sustainability.

TESTIMONIAL FROM THE CONTINUOUS IMPROVEMENT TEAM

The current Lean approach at REP consists in gradually establishing new standards and rituals, and conducting targeted workshops, all with a view to **ensuring customer satisfaction** and **enhancing employee well-being**. This hands-on approach is geared towards resolving everyday problems and requires the active participation of all team members. We always start by identifying "irritating" issues, followed by thorough research and root cause analysis to resolve them and perform at our best.

HOW? OUR SOLUTIONS:

Adopting recycling habits

Technical information Page 11

Opting for compact and multi-functional solutions

Presentations Pages 8 and 9



IDENTIFY AND ANALYZE OPPORTUNITIES



WHY?

- To analyze and understand the current situation in order to better manage and develop it
- To anticipate market trends
- To encourage continuous innovation

WHAT BENEFITS FOR YOU?

- **Information accessibility**

Analyze and understand production data in order to identify possible pivotal changes.

- **Risk reduction**

Identify risks at an early stage and thus implement preventive measures and reduce their future impact.

- **Improving resilience**

Seize opportunities by adopting a proactive and flexible approach, continuously evolving to ensure sustainability.

HOW? OUR SOLUTIONS:



Monitor and analyze in real time

Explanations Page 14

Modernizing your workshop

Demonstration on Page 13

Maintain skills and quality

Description on Page 15

WOULD YOU LIKE TO DISCUSS OTHER ISSUES?

TALK TO ONE OF OUR TEAMS WHO ARE EXPERTS IN THEIR FIELD



MAINTENANCE, MONITORING, AND TROUBLESHOOTING?

Our Aftersales team is here to assist you.



STUDIES, ANALYSIS, AND OPTIMIZATION?

Our Process Development and Applications Service is here to listen to you.



PROJECTS, OFFERS, AND ORGANIZATION?

Our expansive sales team is here to serve you globally.

OUR COMMITMENTS IN TERMS OF CSR

Today, sustainability, also called Corporate Social Responsibility (CSR) is a major concern for businesses. Indeed, the global climate crisis calls for swift and concrete actions with positive and effective environmental, social and economic impacts.

A ROADMAP WITH MULTIPLE COMMITMENTS



Improving our energy efficiency and reducing CO₂ emissions.

RENOVATING BUILDINGS

- Upgrading the **glazing** and exterior **insulation** of tertiary buildings
- LED **relamping** of the workshop

REDUCING CARBON FOOTPRINTS, TRANSPORTATION, AND TRAVELS

- Consolidating shipments of multiple presses
- Incorporating renewable packaging materials
- Expanding the global sales and service network to minimize travel
- Implementing telecommuting, webinars, and remote training

CONTINUOUS IMPROVEMENT

- Reducing **water consumption**
- Exploring options for **generating decarbonized electrical energy (photovoltaics / eco-grazing)**
- A significant reduction in **paper consumption** thanks to our new ERP Sylob.

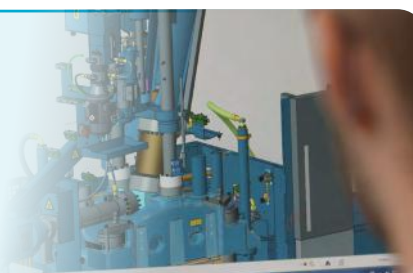
ESTIMATION OF GAINS

- **80 MWh** a year for lighting
- **56 MWh** a year for heating
- **5.5 tonnes** a year for printed paper



Developing Eco-Design

- Sustaining the durability of REP machines (+ 40 years / retrofitting)
- Reducing the machines' energy consumption
- G11 and (Re)Design to Cost (Material reassessment + Process optimization)





Transparency in our relations with our partners

Writing an anti-corruption guide for our teams and partners.



Small actions add up to big results!



Collaborating with our suppliers

IMPLEMENTING AN ETHICAL CHARTER

- Strengthening the commitment to transparency and accountability for all
- Questioning and applying REACH regulations

PROMOTING LOCAL SOURCING

- Purchasing components and raw materials from within Europe
- Local sourcing strategy that involves nearly 90% of French suppliers.



Providing sustainable solutions for our customers

ENERGY EFFICIENCY SOLUTIONS

- Developing advanced technologies to save energy, space and costs
- Integrating Servo Drive & Drive (SDD) or Servo Motor Pump (SMP) to optimize machine energy consumption

DEVELOPING THE CIRCULAR ECONOMY

Rubber recycling solution that regenerates material waste by reintegrating it into the formulation as active ingredients.

ESTIMATION OF GAINS

≈ 30%

energy reduction with SDD or SMP options

Up to 40%

incorporation of recycled content into production

The importance of ISO 14001 certification for our customers and us

We have chosen to embark on the **ISO 14001 certification process** because it underscores our commitment to responsibility and our **desire to actively contribute to compliance with current environmental laws and regulations.**

The ISO 14001 certification will enable us to reinforce our practices and ensure that our activities meet the highest sustainability standards.

This certification will also help us identify, measure, and reduce our environmental impacts. By analyzing our production processes and implementing continuous improvement measures, we can **minimize our carbon footprint**, reduce our **energy and water consumption**, and optimize our **waste management**. Thanks to this proactive approach, we will not only preserve the environment but also make significant long-term savings by reducing our operational costs.

Certification is a genuine opportunity for our company to adopt a responsible approach through continuous improvement, reduce our environmental impacts, and meet stakeholder expectations.

We are eager to share with our customers the results of this responsible initiative and to work together towards a more sustainable future!



Our investment journey began with the issuing of the **CSR commitment charter attestation** by the UIMM in November 2022.



TO FIND OUT MORE

You can find more in-depth information and detailed articles in the dedicated sustainability section of our website.



CMX equipped with a CRB

MORE PRODUCTION, LESS WASTE



In its continuous quest for innovation and more efficient solutions for its customers, REP combines two of its flagship technologies! A groundbreaking alliance addressing major challenges through the integration of a multistation CMX machine and a Cold Runner Block. The result: Significantly higher production capacity and less waste.



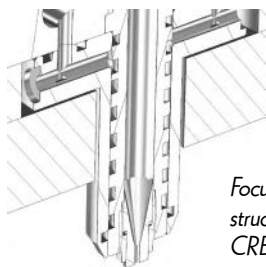
AN UNCOMPROMISING FUSION OF BENEFITS

MULTISTATION PRESS

- Tried and tested for over 20 years
- Robust and reliable
- Compact design: low space requirement
- Increased productivity (4 molds)
- Better and stable injection time: Optimized molding

COLD RUNNER BLOCK

- Stability and precise balancing: control and management of molded material temperature
- Controlled shut-off nozzles, individual sequential opening
- Waste reduction due to the absence of injection channels



Focus on the structure of a CRB nozzle



A huge challenge!

The challenge of this association lies in **integrating a complete and complex system into a confined space** without major structural changes. The CMX is known for its compactness, and now it can proudly boast of this successful alliance!

DISCOVER HOW THE CMX WORKS AND ALL ITS BENEFITS IN A VIDEO!



AN ALLIANCE OF NEW OPPORTUNITIES

■ EASY AUTOMATION

The absence of material waste (such as runners and sprues) simplifies stripping and parts evacuation, thus facilitating the integration of a robot. As an added bonus, the absence of sprues allows for the use of a smaller and more cost-effective automated system!



■ ENHANCED PRODUCTIVITY FOR ALL

This combination achieves an excellent power-to-surface ratio. This means more precise molding, even for the most demanding and complex applications!

Come and find out more at



SAVING AND MAKING PRODUCTION SUSTAINABLE



Nothing beats eliminating a problem before it even exists! To address waste generation (such as material scraps, sprue, runners), volatile energy loss, and excessive consumption during production, REP offers a range of alternative solutions that optimize sustainable production.

MOVING THE PROCESS FORWARD

ELECTRO-HYDRAULIC ECO-MANAGEMENT SOLUTION

Integrating a **Servomotor-pump** (from V710) or **Servo Dive & Drive** (up to V510) for significant savings.

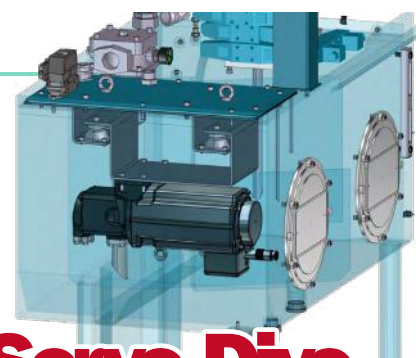
Solutions based on a **servomotor** (electro-hydraulic) and an **optimized fixed displacement pump** for variable speed.

- **Low-energy consumption**

High responsiveness and optimized consumption. Natural cooling of the pump. Ultra-compact monobloc solution.

- **Easy maintenance & reliability**

Simple mechanism with few moving parts. No need for reservoir drainage. Better suction.



Servo Dive & Drive

In 25 years, the energy consumption of REP presses has fallen by 82%.

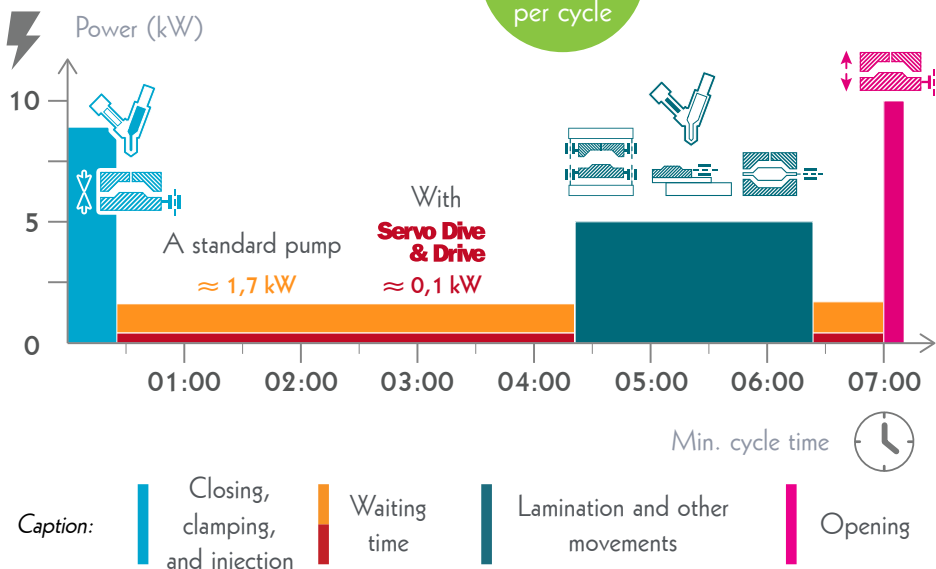
CASE STUDY - S510 Y50 Electricity consumption cycle

The distinguishing feature of this solution is its **consistent power consumption of 100W** during cycle downtime.

Graph of power consumption for one cycle of a machine (300 t), with (■) and without (■) Servomotor SDD.

On this cycle, with **04:46min** idle time, the **energy efficiency** yields **428.8kW** per cycle, achieving an **optimization of 94%** in electricity consumption during idle periods.

OVERALL REDUCTION
-31%
energy savings
per cycle



BENEFITS IN FIGURES

Depending on the installation and development environment of the solution, we get:

-30% to -40%

average reduction in energy consumption per cycle

MEASURE YOUR ENERGY CONSUMPTION IN REAL TIME

Software from the REP Pack 4.0 enabling real-time evaluation and analysis of press consumption.



To find out more:
Article **Page 14**

SAVE TIME AND ACHIEVE BETTER QUALITY

MULTI-ACTION TECHNOLOGY

- In the injection unit

Homogenization of **thermal distribution in the rubber flow**, with the center of the piece being warmer.

- In the mold

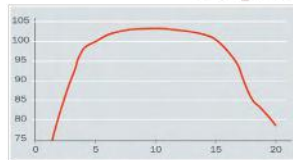
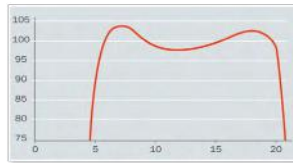
Rebalancing the filling between the cavities with mixture at the same temperature.

The coldest cavity is heated.



TurboCure®

2 MODULES, 1 SOLUTION



BENEFITS IN FIGURES

These technologies offer great potential, notably:

Up to 60%

reduction
in cure time

40%

average total
energy savings

VIDEO OF THE OPERATION IN DETAIL!



TO FIND OUT MORE

Sharing knowledge and know-how,
our partners for these projects:

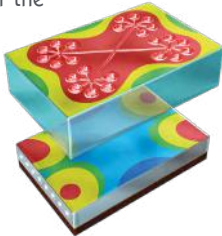


REDUCE WASTE (ENERGY AND MATERIALS)

ACHIEVE A HOMOGENEOUS THERMAL DISTRIBUTION

ISOTHERMOULD®

Compensating for heat losses between the center and the edges of the mold with **optimized thermal distribution and balancing** on the heating plates.



BENEFITS IN FIGURES

10 % to 15 %

of energy savings achieved through
the insulation of the injection unit

-16%

energy loss thanks to improved
traverse insulation

19% to 39%

average savings thanks to reinforced
mold insulation

< 3°C

of thermal dispersions with
Isothermould® technology

PREVENT ENERGY LOSSES FROM THE HEATING ELEMENTS.

■ Protect the injection core

Isolate the **heating elements** from the injection unit (extruder and injection) to **reduce consumption**, maintain **temperature stability**, while maintaining the same excellent level of performance.



■ Control the insulation of moving components

Better insulation (20 mm strips) between
upper traverse rail and heating plate.

■ Strategic mold insulation

One of the most significant factors identified is the mold area, as its heating alone **accounts for nearly 50% of the machine's energy consumption**.

Install either **blankets** or **insulating blocks** to significantly reduce losses and waste of energy released by this area.



Example of
an insulating
blanket

Alone we go faster, together we go further!

Example of combined integration of a **Servo Drive & Drive** with TurboCure technology and **insulation** of the heating elements.

Results: **Productivity increased by +100%** and **Energy cost per part produced reduced by -75%**.



RECYCLE YOUR WASTE



A PATENTED AND PROVEN PROCESS

UNIVERSAL RECYCLING

- Applicable to all types of rubber (except silicone)
- Thermo-mechanical process without chemical additives
- Preserves the characteristics of the formulation blend

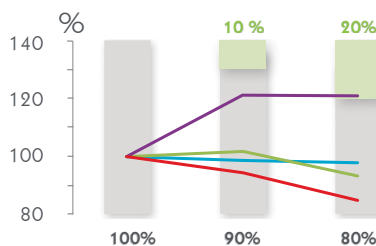
COST REDUCTION

- No more logistical costs associated with removing production waste
- Less material costs (lower cost per kg)
- In-house management of production cycle

IMPACT ON THE MECHANICAL PROPERTIES

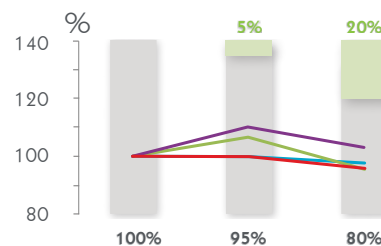
VARIATIONS IN FKM CHARACTERISTICS

Material used for studies < 200 μm



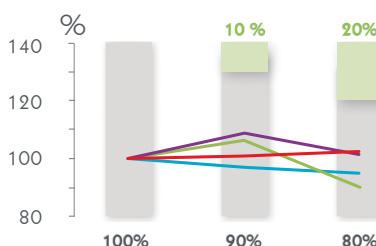
VARIATIONS IN THE NATURAL RUBBER CHARACTERISTICS

Material used for studies < 500 μm



VARIATIONS IN AEM CHARACTERISTICS

Material used for studies < 500 μm



Raw material
Devulcanized material
Elongation
Hardness
Tensile strength
Tear strength

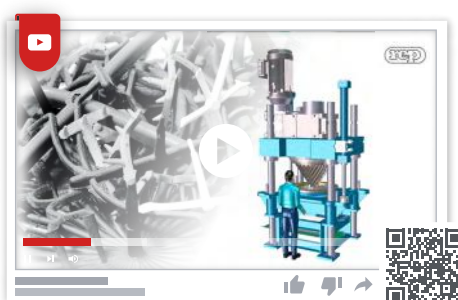
FREE ESTIMATE

To best measure your future added value, we have created a template to **estimate your economic and ecological gains** (CO₂ emissions). You only need to provide us with the following data to start a project together!

- Formulation(s) of material to be recycled
- Quantity to be recycled per year
- Average price of each formulation
- Location country
- The equipment's potential working hours/days.

Rodrigo DIAZ
R&D Process and
Application Engineer
Regeneration Expert

VIDEO EXPLAINING HOW IT WORKS!



SOME FIGURES

The benefits and potential of this solution are immediately validated by the following data:

Up to 40%

of recycled material reintroduced into the original formula

-20%

average reduction in production waste

13,360 kt

of rubber produced per year worldwide

Come and find out more at



PRODUCE AND SAVE ON YOUR CONSUMPTION



One of the most universal and impactful challenges in these times of inflation is how to control and reduce our energy consumption costs. Thanks to a range of presses that combine hybrid operation and electrically controlled movements, REP has opened up the market for economical horizontal injection machines. Increased productivity, optimized compactness and sustainable production!



A SIGNIFICANTLY REDUCED ENVIRONMENTAL IMPACT!

SUSTAINABLE PRODUCTION

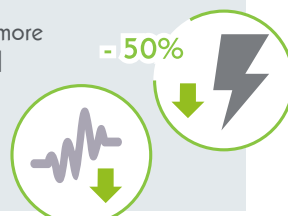
- **No water consumption** thanks to air cooling
- Minimum risk of **contamination**: oil-free molding area
- Process optimization for **14% waste reduction** (reduced flashes and waste)
- **Overall reduction** in the volume of oil (smaller and closed circuit)
- Extended **maintenance intervals** and lifespan.

The small change that makes a big difference!

The special feature of this configuration is the **hydraulic accumulator**.

As part of the High Performance Pack option, it enables you to:

- Convert strategic movements into **very fast electrical movements**
- Use a smaller, more economical and quieter motor.



THEY TALK ABOUT IT EVEN BETTER THAN WE DO!

Excerpt from the Success Story of our customer SHS Italia.



■ WHAT ADVANTAGES CAN WE ATTRIBUTE TO THIS SPECIFIC MODEL?

If we were to group them into 4 main points, we would say: compact **dimensions**, controlled **energy usage**, **remote maintenance**, and **precision**.

■ WHAT REAL ADVANTAGES HAVE BEEN IDENTIFIED ON THESE MACHINES IN TERMS OF PRODUCTIVITY?

The possibility to have a **fully customizable automatic molding cycle**, offering precise control over both duration and repeatability aspects.

Thanks to the reduction in manual operations, operators can focus on value-added activities.



Mr. Giuseppe NATOLI
Managing Director

To be continued ...

Full testimonial available on our website!



DISCOVER ITS VARIOUS ADVANTAGES ON VIDEO!



OUR RETROFIT OFFER

INVEST IN A SECOND LIFE



The lifespan and reparability indices of the equipment around us are often critical factors that influence investment decisions. Although REP machines boast a lengthy lifespan of 30 to 40 years, the obsolescence of certain components raises some questions about their end-of-life. In some instances, Retrofitting is the most effective solution for minimizing investment and waste while modernizing installations. Breathing new life to enhance both ergonomics and performance!

COMFORT AND QWL (QUALITY OF WORK LIFE)

USER-FRIENDLY EQUIPMENT

- **Modernization of the features** through the integration of contemporary standards such as time management, backups, accessibility, comfort, etc.
- The right time to reconsider **integrating new options** (energy savings, process evolution, etc.).

IMPROVED PERFORMANCE

- Enhanced **performance** (reliability, availability, maintainability, precision)
- Access to features offered by 4.0 connectivity
- **Troubleshooting** tools from the HMI

WASTE AND SUSTAINABILITY

MITIGATE OBSOLESCENCE

- Anticipate to **avoid breakdowns** and potential production stoppages caused by aging electrical components

CIRCULAR ECONOMY APPROACH

- Repackage with **reduced investment**
- Recover and recycle replaced components for waste recovery.

To find out more!

Combine the Retrofit offer with the signing of a **Preventive Maintenance Agreement**.

Secure additional support and maintain the quality of your services.



Example of a retrofitted G7 machine.



INSIGHTS AND FEEDBACKS FROM THE FIELD

Feedback from our customer Dervasil - France

For our customer, a supplier of equipment (such as surge protectors) for the energy industry, its project started after its G7 range was analyzed by the Computerized Maintenance Management System.

This study revealed two issues:

- An **increase in machine stoppages**, leading to a fall in production and profitability
- An **escalation of maintenance costs**

After a few technician interventions, REP identified and highlighted the **impending obsolescence of electronic boards** and proposed to rebuild the electrical cabinets.

The client opted for this alternative and approved the retrofitting of 2 G7 machines, together with the **opportunity to integrate them into the 4.0 system** alongside their other 3 G9 presses.

Results after these 2 operational retrofits:

- **Customized corrections and adjustments** applied to needs and configuration

- Optimized activity with **considerable** production time savings
- 4.0 monitoring and management now possible
- Operators and setters delighted to **benefit** from "new" **modern functional tools**.

Dervasil
Sicame Group

Mr. Mohammed DZIRI
Production Manager



MONITOR AND CONTROL YOUR CONSUMPTION



Optimizing the use of modern technologies is crucial for enhancing productivity. For several years, REP has been consistently developing its connected features to integrate new technologies at the heart of industrial processes. Using tools that offer a blend of flexibility, precision, responsiveness, and efficiency facilitates production control.

A GREENER PRODUCTION THANKS TO 4.0 MONITORING

REP Pack 4.0

14 SMART MODULES

- Real-time supervision
- Modeling production costs and calculating the cost price
- Notifications for optimized responsiveness

CONNECTED PREDICTIVE MAINTENANCE

REP Predict

ANTICIPATION

- Monitoring the internal parameters of the press
- Wear detection

PREVENTION & ANALYSIS

- Avoid and prevent over-consumption
- Study and decrypt recovered data

PRECISE ANALYSES WITH ACCESSIBLE DATA

REP WattMeter

INSTANTANEOUS CONSUMPTION MEASUREMENT

- Recording and calculating energy used by cycle, room, hour, day or production.

- Allows adjusting and enhancing energy efficiency

PERMANENTLY GUARANTEED PRODUCTION STABILITY



Traceability: monitoring set values, measured values and supervising the process conformity.

INTRODUCTION TO 4.0 SUPERVISION

Customer feedback **Sicame group** - France

For this customer, which has been using Suite 4.0 for 2 years, there were two major challenges:



- Integrating a supervisory system into a workshop never before equipped.
- Connecting and integrating communication among 6 presses of different generations and configurations (4 G9, one G4 with G9 PLC, and one G7 soon to be retrofitted to G10).

This integration had two main objectives for the production of high-voltage electrical insulation parts:

Understanding the quality problems associated with the dielectric properties of parts

- Controlled tolerance setting for key strategic parameters
- Real-time monitoring of alerts on TV
- Centralizing recipe formulas

Enhancing Overall Equipment Effectiveness by monitoring the aging of production resources and establishing investment priorities accordingly

- Analyzing the cycle time
- Training operators on the "Press Utilization Rate" function.

sicame
GROUP

Mr. Laurent
SÉRÉZAT

Industrialization
Project Manager



Your production line at your fingertips

Explore the full range of software and applications offered in REP Pack 4.0: 14 modules, all designed to support you in your daily operations!



TRAINING FOR MORE EFFICIENCY



Since a poorly trained or untrained customer will be less satisfied or will more frequently call the aftersales service, REP encourages its customers to train their teams. This objective directly aligns with one of the key social pillars: offering skilled and skill-enhancing training.

A COMPREHENSIVE RANGE OF TRAINING SESSIONS

Provided by the **Aftersales Service** and the **Process Development Department**, these training sessions are designed for operators, setters, maintenance technicians, mold designers, drafting engineers, and methods managers.

PRESS OPERATION AND MAINTENANCE TRAINING COURSES

S1 / S2



Using G7/G10 presses



S3/S4



Trouble-shooting & maintenance of G7/G10 presses



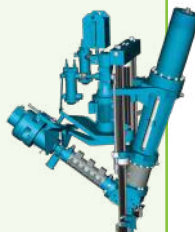
G7 **G8** **G9** **G10**

TRAINING COURSES ON PERFORMANCE OPTIMIZATION

A1



Choosing a molding technique



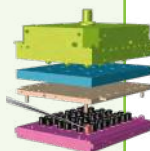
A2/A3



Process and mold design



Adjusting the molding parameters



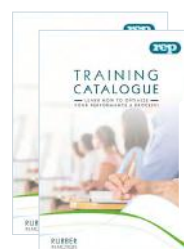
WORKSHOP SUPERVISION

S5



REP Net 4.0 Training Workshop

REP Net4.0



See our catalog



SOME TRAINEE OPINIONS

"It is truly beneficial to be trained on functional machines we have in our workshop."

"The trainers are right at the heart of the business, highly pedagogical with very clear explanations and exceptionally well-crafted training materials."

"We have possibility to practice and test in real life what we have learned in theory." A real advantage to make the training even more concrete."

"The training sessions are designed to accommodate participants of all levels, including novices like myself. This training has allowed me to learn many new concepts and gain a much better understanding of how a press works."

"The training sessions are tailored to all skill levels and are highly beneficial for both skill enhancement and optimization."



Qualiopi
processus certifié

Quality certification has been awarded for the following categories of activities:
Training courses.

To find out more!

Find all the **programs**, **objectives**, and **registration details** in the training section of our website.



BRAZIL

REP Injetoras de Borracha

Rua Amorim Diniz, 60 - Room 01

Jardim Jaú - São Paulo - SP - 03630-040

☎ : +55 11 2924 5954

CHINA

URP

No. 58 Hehua Road,

LANGFANG ETDZ, Hebei province

☎ : +86 316 6079075

RUSSIA

REP Материалы и Технологии

111397, г. Москва,

Зеленый проспект, д. 20,

этаж 7, пом. 1, ком. 23.

☎ : +7 495 708 4486

INDIA

REP Machines Manufacturing Private Limited

Plot No. 112, 4th Road, Jigani Industrial

Area, II Phase, Anekal Taluk,

BANGALORE, Karnataka - 562106

☎ : +91 98453 90426

ITALY

• REP Italiana

Via Galileo Ferraris 16/18

10040 DRUENTO (TO)

☎ : +39 011 42 42 154

• RPM

Via Cascina Croce 2/c

25050 Paderno Franciacorta (BS)

☎ : +39 030 6857 425

GERMANY

REP Deutschland

Sauergasse 5-7

69483 WALD-MICHELBACH

☎ : +49 6207 9408 0

U.S.A.

REP Corporation

310 Katom Drive

KODAK, Tennessee 37764

☎ : +1 847 69 77 210

COMING SOON:

2024



Expobor

International Rubber Technology Show



São Paulo,
BRAZIL

26-28
JUNE



2024

GERMAN RUBBER CONFERENCE



Nuremberg,
GERMANY

01-04
JULY

2025



2025



Düsseldorf,
GERMANY

08-15
OCT.



rep

REP international

15 rue du Dauphiné

69964 CORBAS

FRANCE

Tél. : +33 472 215 353

Fax : +33 472 512 235

✉ commercial@repinjection.com

www.repinjection.com

RUBBER IN MOTION

